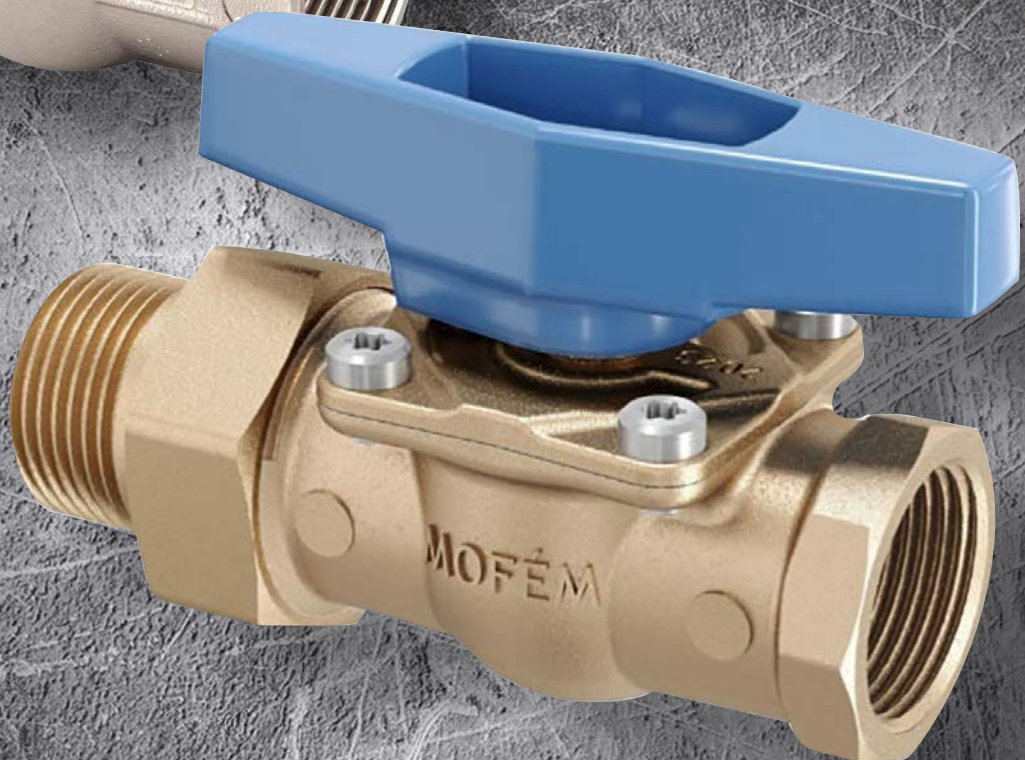


MOFÉM BALL VALVES FOR WATER AND GAS INSTALLATIONS





ABOUT US

STROHM MOFÉM PLC

- Founded in 1900
- Hungary's market leader sanitary products and industrial valves producer
- Direct export to 15 countries
- Sales of Mofém, Strohm Teka and Teka products
- Member of Strohm Group



STROHM GROUP

- Currently present in 50 countries
- 2 own factories
- More than 500 employees
- Specialised in the production and sales of taps, showers, shower trays, shower enclosures, wash-basins, bathtubs, toilets, bathroom furniture and bathroom accessories



PRODUCTION



Casting, machining, forging

Computer controlled casting machines, state-of-the-art CNC transfer machines.



Grinding, polishing

Automated grinding process with robot technology.



Electroplating

Fully automated plating plant.



Assembly

Operational and leakage tests on 100% of products.



Storage and transport

Warehouse system specialised for export and domestic trade.

CERTIFICATES

We are constantly developing our processes and investing in our factory while obtaining more and more certificates.





Produced for
over 50 years



Stainless steel screws



Reliable long term
operation



100 % pressure test
All ball valves are pressure
tested under water.



Over 60 million
sold units



Repairable construction.

By removing the deck
repair and replacement of
components is possible,
without removing product
from the pipeline.



Mechanical strength.

No deformation during
assembly, no crack or break
of the ball valve body.

MOFÉM AHA BALL VALVES

Operating temperature

Min. 0 °C
Max. 90 °C for industrial water
Max. 65 °C for drinking water

Working pressure

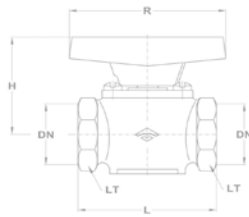
16 bar

Applicable medium

Drinking water
Industrial water



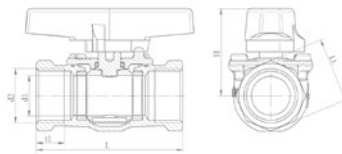
Ball valve Female x Female



Nominal dimension		Dimensions in mm				Female x Female
mm	inch	L	H	R	Lt.	Reference
8	1/4"	50	41	65	19	113-0001-00
10	3/8"	50	41	65	22	113-0002-00
32	5/4"	107	69	105	50	113-0051-00



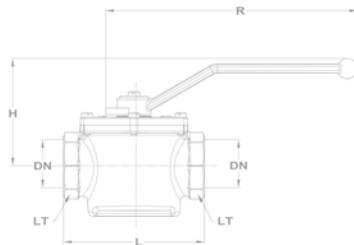
Ball valve Female x Female



Nominal dimension		Dimensions in mm				Female x Female
mm	inch	L	H	t1	Lt.	Reference
12,5	1/2"	60	38	13	25	113-0007-00
19	3/4"	75	45	16	32	113-0018-00
25	1"	90	54	17	40	113-0034-00



Ball valve Female x Female

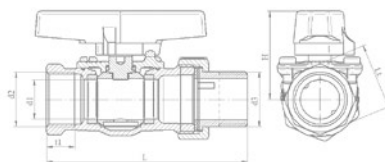


Nominal dimension		Dimensions in mm				Female x Female
mm	inch	L	H	R	Lt.	Reference
40	6/4"	125	96,5	105	55	113-0052-00
50	2"	159	113	105	70	113-0053-00



Ball valve Male x Female

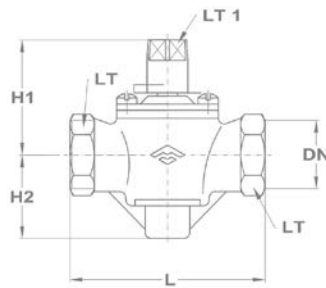
• With extension



Nominal dimension		Dimensions in mm				Male x Female
mm	inch	L	H	t1	Lt.	Reference
12,5	1/2"	88	38	13	25	113-0009-00
19	3/4"	107	45	16	32	113-0026-00
25	1"	122	54	17	40	113-0038-00



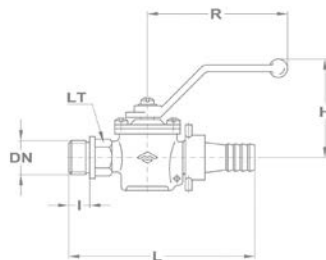
Water master cock



Nominal dimension		Dimensions in mm				Female x Female	
mm	inch	Lt1	L	H1	H2	Lt	Reference
20	3/4"	14	86,5	56	45	32	113-0019-00



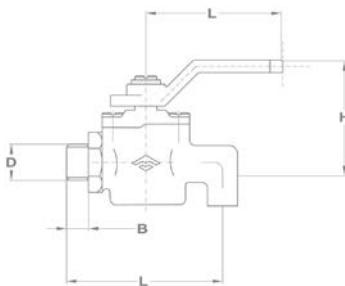
Boiler filling ball valve



Nominal dimension		Dimensions in mm					Reference
mm	inch	L	H	R	I	Lt.	
15	1/2"	107	52	90	12	19	113-0010-00
20	3/4"	142	78	110	15	17	113-0023-00



Draining ball valve



Nominal dimension		Dimensions in mm					Reference
mm	inch	L	I	H	B	D	
8	1/4"	54	55,5	40	8	1/4"	113-0045-00
10	3/8"	54	55,5	40	8	3/8"	113-0046-00
15	1/2"	54	55,5	40	12	1/2"	113-0047-00



MOFÉM FLEXUM GAS BALL VALVES

Operating temperature

Min. 0 °C
Max. 60 °C

Working pressure

5 bar

Applicable medium

Gas (PB, ethane, butane, methane, natural gas etc.)



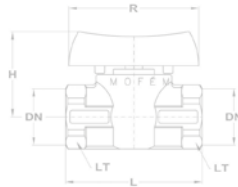
100 % pressure test

All ball valves are pressure tested under water.



Gas ball valve

- Female x Female

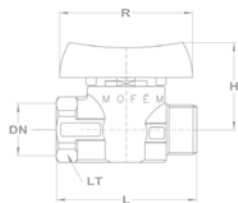


Nominal dimension	Dimensions in mm				Female x Female
	DIN	L	H	R	Lt.
1/2"	67	43	60	27	113-0065-40
3/4"	76	49	75	32	113-0067-40
1"	92	58	90	39	113-0069-40



Gas ball valve

- Male x Female



Nominal dimension	Dimensions in mm				Male x Female
	DIN	L	H	R	Lt.
1/2"	69	36	60	25	113-0074-40
3/4"	78	49	75	32	113-0095-40



Gas ball valve with with thermal closing valve

113-0074-35

- Gas ball valve male x female
- Thermal closing valve



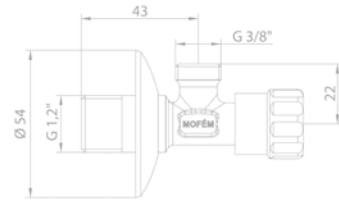
Angle valves



Angle valve

1/2" - 1/2" **163-0002-00**

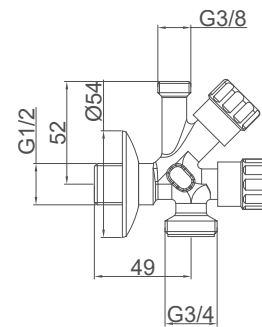
1/2" - 3/8" **163-0006-00**



Combinated angle valve

150252800

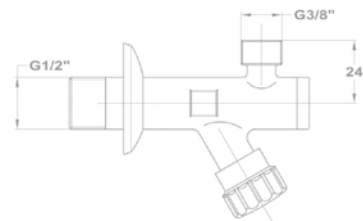
- Washmachine/washingmachine connection - 3/4"
- Washbasin mixer connection - 3/8"
- Wall connection - 1/2"
- Adjustable, removable headpart
- With tube connection



Angle valve with filter

163-0010-10

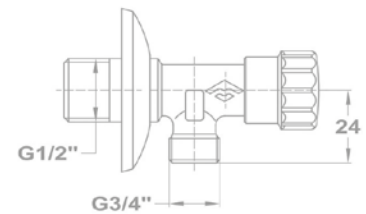
- With stainless steel, removable and cleanable filter
- Connection: 3/8"



Washingmachine valve

163-0014-00

- Chrome surface
- 1/2" - 3/4"





STROHM MOFÉM Zrt.
H-9200 Mosonmagyaróvár, Terv u.92
Hungary

Phone: +36/96 574 500
www.mofem.hu