



125 YEARS

# MOFÉM BALL VALVES FOR WATER AND GAS INSTALLATIONS



## MOFÉM FLEXUM GAS BALL VALVES

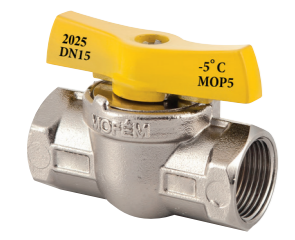
**Operating temperature**  
Min. 0 °C  
Max. 60 °C

**Working pressure**  
5 bar

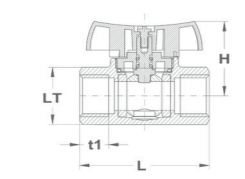
**Applicable medium**  
Gas (PB, ethane, butane, methane, natural gas etc.)



**100 % pressure test**  
All ball valves are pressure tested under water.



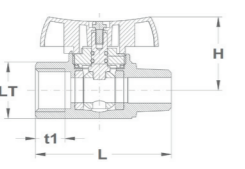
**Gas ball valve**  
• Female x Female



Nominal dimension	Dimensions in mm				Female x Female
DIN	L	H	t1	LT	Kód
1/2"	67	38	15	26	113-0065-40
3/4"	76	42,5	16,3	31	113-0067-40
1"	92	50,8	19,1	39	113-0069-40



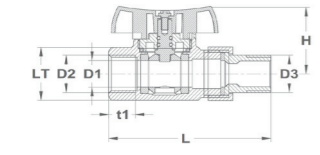
**Gas ball valve**  
• Male x Female



Nominal dimension	Dimensions in mm				Male x Female
DIN	L	H	t1	LT	Kód
1/2"	69	36	15	25	113-0074-40
3/4"	78	49	19,5	32	113-0095-40



**Gas ball valve with thermal closing valve**  
113-0074-35  
• Gas ball valve male x female  
• Thermal closing valve



Nominal dimension	Dimensions in mm				Male x Female		
D1 mm	D2 ISO 7-1	D3 MOP 5 (ISO 228-1)	L	H	t1	LT	Kód
15	RP 1/2	G 1/2	90	40	15	26	113-0066-10
20	RP 3/4	G 3/4	106	42	16,3	31	113-0068-10
25	RP 1	G 1	124	50	19,1	38	113-0070-10

### Angle valves

#### Ceramic angle valves



**You are in control**  
Quick 1/4 turn shut-off

Thanks to the 1/4-turn ceramic cartridge, you can open or close the valve quickly and precisely with a simple 90° turn. Perfect for situations where you need to shut off the water supply immediately.



**Ceramic angle valve**  
1/2" - 1/2" 163-0041-00



**Ceramic angle valve**  
1/2" - 3/8" 163-0040-00

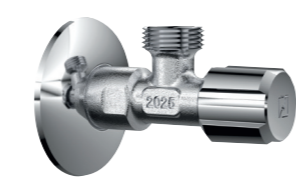


**Ceramic washingmachine valve**  
1/2" - 3/4" 163-0042-00



**Ceramic combined angle valve**  
1/2" - 3/8" - 3/4" 163-0043-00

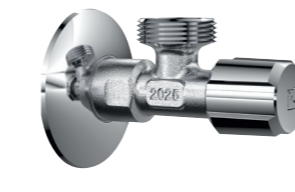
#### Traditional angle valves



**Angle valve**  
1/2" - 1/2" 163-0002-00  
1/2" - 3/8" 163-0006-00



**Combined angle valve**  
150252800  
• Washmachine/washingmachine connection - 3/4"  
• Washbasin mixer connection - 3/8"  
• Wall connection - 1/2"  
• Adjustable, removable headpart  
• With tube connection



**Washingmachine valve**  
163-0014-00  
• Chrome surface  
• 1/2" - 3/4"



**Angle valve with filter**  
163-0010-10  
• With stainless steel, removable and cleanable filter  
• Connection: 3/8"



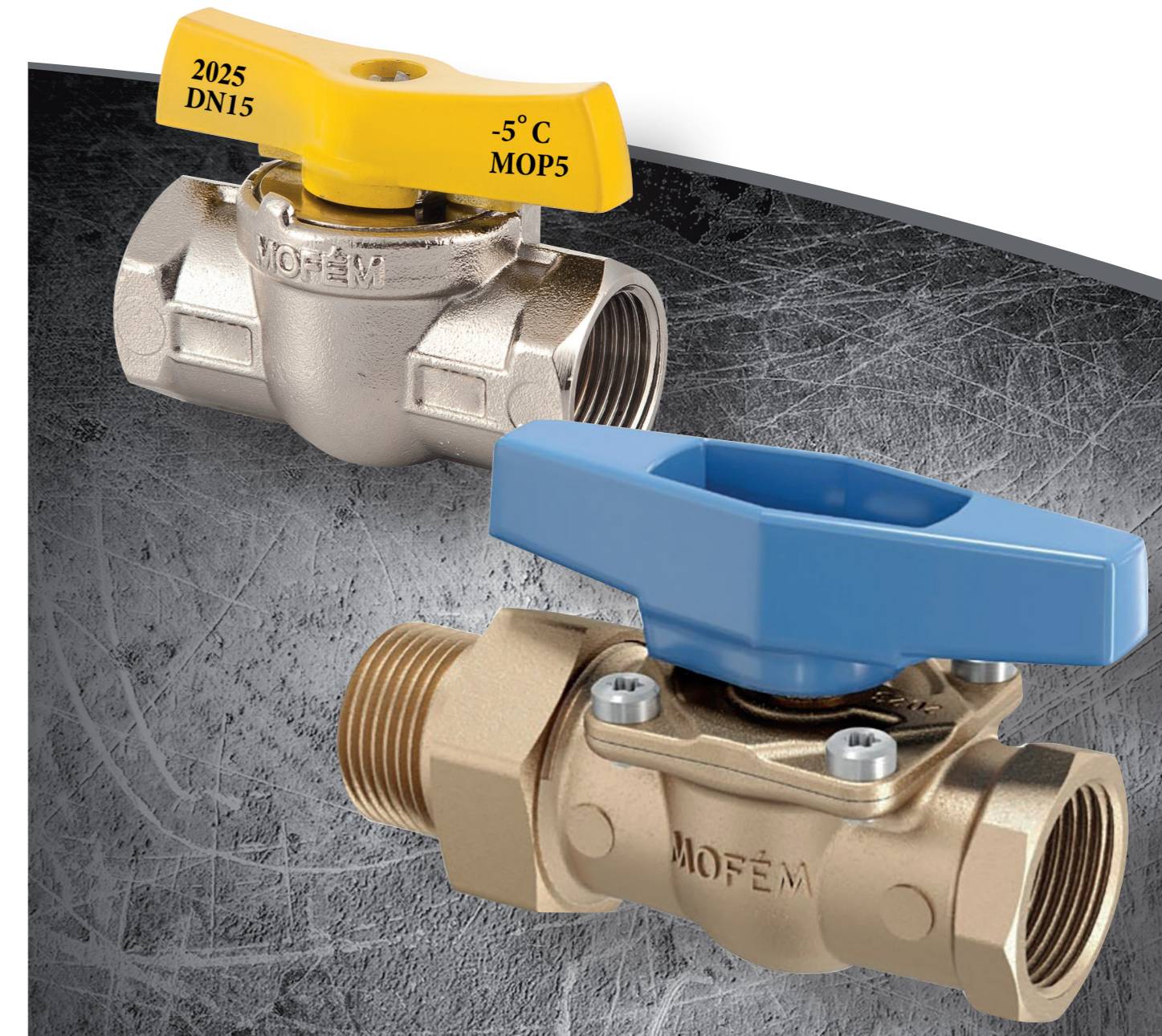
STROHM MOFÉM Zrt.  
H-9200 Mosonmagyaróvár, Terv u. 92.  
Hungary

[www.mofem.hu](http://www.mofem.hu)

This edition contains up-to-date offers as of the time of publication. The manufacturer reserves the right to change the product range and specifications after the editing of the edition has been completed. The images, illustrations, diagrams, colors, descriptions, and technical data presented in this publication are for informational purposes only. The manufacturer reserves the right to make changes to the products and their technical specifications.

The entire publication is protected by copyright. The use of its contents for commercial purposes without prior permission from STROHM MOFÉM Zrt. is not permitted. STROHM MOFÉM Zrt. assumes no responsibility for possible typographical or other errors in the catalogue.

125 YEARS



# MOFÉM AHA BALL VALVES

10  
YEAR  
GUARANTEE

**Operating temperature**  
Min. 0 °C  
Max. 90 °C for industrial water  
Max. 65 °C for drinking water

**Working pressure**  
16 bar

**Applicable medium**  
Drinking water  
Industrial water



Produced for  
over 50 years



Stainless steel screws



Reliable long term  
operation



100 % pressure test  
All ball valves are pressure  
tested under water.



60  
M+

Over 60 million  
sold units



**Reparable construction.**  
By removing the deck  
repair and replacement of  
components is possible,  
without removing product  
from the pipeline.

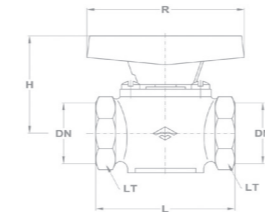


**Mechanical strength.**  
No deformation during  
assembly, no crack or break  
of the ball valve body.

## MOFÉM AHA BALL VALVES



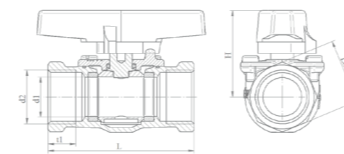
Ball valve Female x Female



Nominal dimension		Dimensions in mm				Female x Female	
mm	inch	L	H	R	Lt.	Reference	
8	1/4"	50	41	65	19	113-0001-00	
10	3/8"	50	41	65	22	113-0002-00	
32	5/4"	107	69	105	50	113-0051-00	



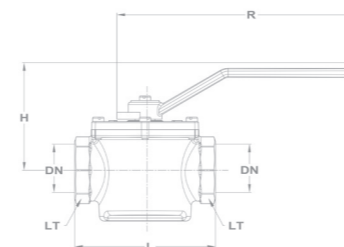
Ball valve Female x Female



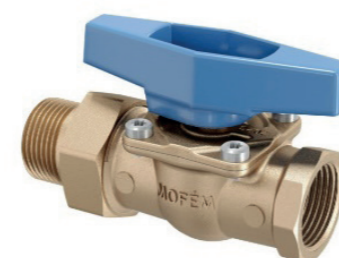
Nominal dimension		Dimensions in mm				Female x Female	
mm	inch	L	H	t1	Lt.	Reference	
12,5	1/2"	60	38	13	25	113-0007-00	
19	3/4"	75	45	16	32	113-0018-00	
25	1"	90	54	17	40	113-0034-00	



Ball valve Female x Female

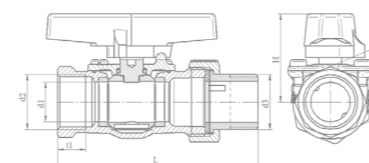


Nominal dimension		Dimensions in mm				Female x Female	
mm	inch	L	H	R	Lt.	Reference	
40	6/4"	125	96,5	105	55	113-0052-00	
50	2"	159	113	105	70	113-0053-00	



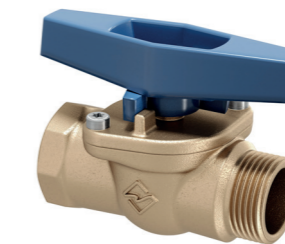
Ball valve Male x Female

• With extension

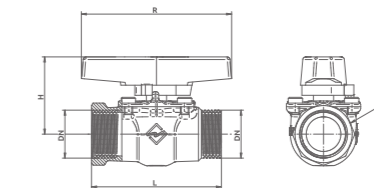


Nominal dimension		Dimensions in mm				Male x Female	
mm	inch	L	H	t1	Lt.	Reference	
12,5	1/2"	88	38	13	25	113-0009-00	
19	3/4"	107	45	16	32	113-0026-00	
25	1"	122	54	17	40	113-0038-00	

## MOFÉM AHA BALL VALVES



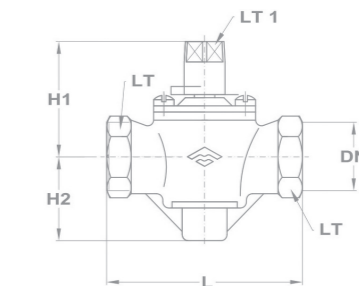
Ball valve Fix Male x Female



Nominal dimension		Dimensions in mm				Female x Female	
mm	inch	L	H	R	Lt.	Reference	
12,5	1/2"	60	38	65	25	113-0085-00	
19	3/4"	75	46	85	32	113-0086-00	
25	1"	90	54	105	40	113-0087-00	



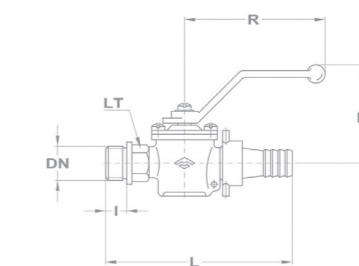
Water master cock



Nominal dimension		Dimensions in mm				Female x Female	
mm	inch	Lt1	L	H1	H2	Lt	Reference
20	3/4"	14	86,5	56	45	32	113-0019-00



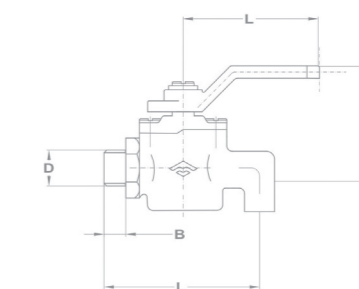
Boiler filling ball valve



Nominal dimension		Dimensions in mm				Female x Female	
mm	inch	L	H	R	I	Lt.	Reference
15	1/2"	107	52	90	12	19	113-0010-00
20	3/4"	142	78	110	15	17	113-0023-00



Draining ball valve



Nominal dimension		Dimensions in mm				Female x Female	
mm	inch	L	I	H	B	D	Reference
8	1/4"	54	55,5	40	8	1/4"	113-0045-00
10	3/8"	54	55,5	40	8	3/8"	113-0046-00
15	1/2"	54	55,5	40	12	1/2"	113-0047-00